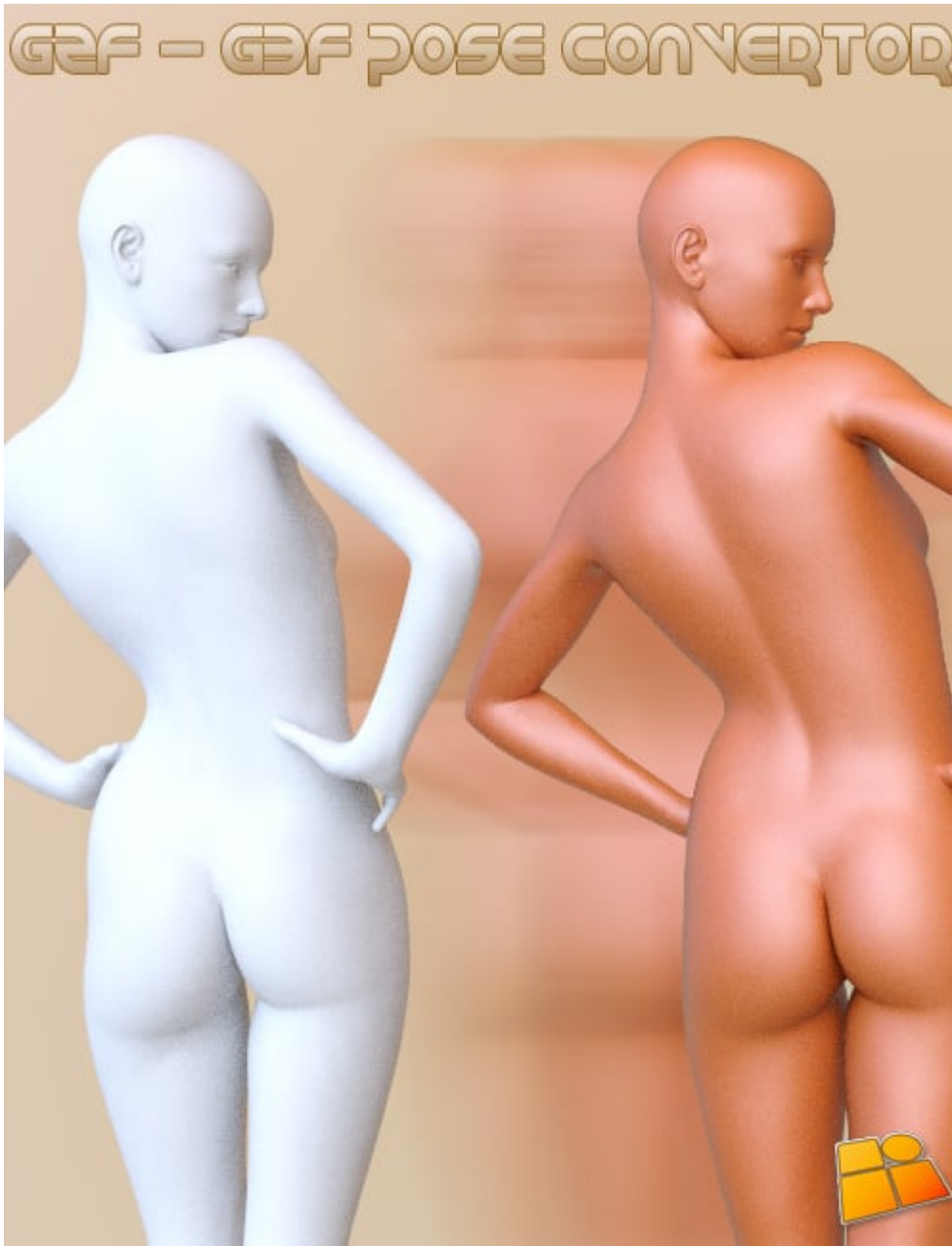


# Pose Converter Genesis 2 Female(s) to Genesis 3 Female(s)



<b>Product Name:</b>	Pose Converter Genesis 2 Female(s) to Genesis 3 Female(s)
<b>Product ID:</b>	22122
<b>Published Artist(s):</b>	<a href="#">3D Universe</a>
<b>Created By:</b>	N/A
<b>Release Date:</b>	2015-06-26

## Product Information

- Required Products: *None*

Unable to use all those cool Genesis 2 Female poses you invested in on the flashy new Genesis 3 Female figure?

Fear not, help is here... our easy to use DAZ Script will convert any Genesis 2 Female poses to work with Genesis 3 Female in a flash. Simply select the pose (or poses) you wish to convert and new poses with the updated filename you choose will be created when you click the magic button.

## Product Notes

### Installation Packages

Below is a list of the installation package types provided by this product. The name of each package contains a [Package Qualifier](#), which is used as a key to indicate something about the contents of that package.

- 1 Core <sup>1)</sup>

[ ] = *Optional, depending on target application(s)*

Not all installation packages provide files that are displayed to the user within the interface of an application. The packages listed below, do. The application(s), and the location(s) within each application, are shown below.

### Pose Converter Genesis 2 Female(s) to Genesis 3 Female(s) (Core)

- You can find new icons for loading this product in the following DAZ Studio Folders:
  - "Scripts:Pose Converter Genesis 2 Female to Genesis 3 Female"
- You can find new icons for this product in the following DAZ Studio Categories:
  - "Scripts:Utilities"

### Additional Details

- [22122\\_pose-converter-user-instructions.pdf](#)
- Due to rigging and body proportion difference between Genesis 2 Female and Genesis 3 Female, slight adjustments may still be needed on the converted pose.
- This script is designed to convert uncompressed .DUF figure poses.

Below is a list of files provided by the [Pose Converter Genesis 2 Female\(s\) to Genesis 3 Female\(s\)](#) product.

## Core

### Pose Converter Genesis 2 Female(s) to Genesis 3 Female(s)

- **Content :**

- /ReadMe's/22122\_Pose-Converter-User-Instructions.pdf
- /Runtime/Support/DAZ\_3D\_22122\_Pose\_Converter\_Genesis\_2\_Female(s)\_to\_Genesis\_3\_Female(s).dsa
- /Runtime/Support/DAZ\_3D\_22122\_Pose\_Converter\_Genesis\_2\_Female(s)\_to\_Genesis\_3\_Female(s).dsx
- /Runtime/Support/DAZ\_3D\_22122\_Pose\_Converter\_Genesis\_2\_Female(s)\_to\_Genesis\_3\_Female(s).jpg
- /Scripts/Pose Converter Genesis 2 Female to Gensis 3 Female/Genesis 2 Female to Genesis 3 Female Pose Converter.dse
- /Scripts/Pose Converter Genesis 2 Female to Gensis 3 Female/Genesis 2 Female to Genesis 3 Female Pose Converter.png

### Resolved Issues

- *None*

### Known Issues

- *None*

## Support

Visit our site for [technical support](#) questions or concerns.

1)

The contents of this package are in DAZ Studio Native formats

From:  
<http://docs.daz3d.com/> - **Documentation Center**

Permanent link:  
[http://docs.daz3d.com/doku.php/public/read\\_me/index/22122/start](http://docs.daz3d.com/doku.php/public/read_me/index/22122/start)

Last update: **2016/11/08 03:29**

