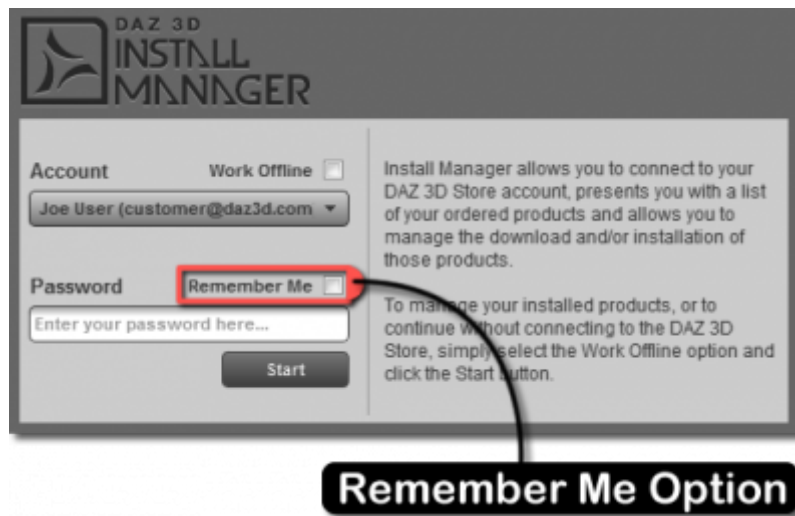


Remember Me Option



Description

The **Remember Me Option** is used to cause the password you enter in the [Password Field](#) to be securely stored for the account that is currently displayed in the [Account Selector](#), once the [Start Button](#) has been pressed. Clearing a stored password for an account can be accomplished by unchecking the option and then continuing with logging in to the account. This option, along with the [Password Field](#), is disabled when the [Work Offline Option](#) is checked.

Parent Elements

Below is a list of interface elements that the *Remember Me Option* can exist within:

- [Account Window](#) - Provides you with the means to add an account, choose which account you would like to access and ultimately log in to that account, so that you can retrieve any product downloads that may be waiting for you on the [DAZ 3D](#) servers.

From:
<http://docs.daz3d.com/> - Documentation Center

Permanent link:
http://docs.daz3d.com/doku.php/public/software/install_manager/referenceguide/interface/remember_me_option/start

Last update: 2013/05/14 18:49

