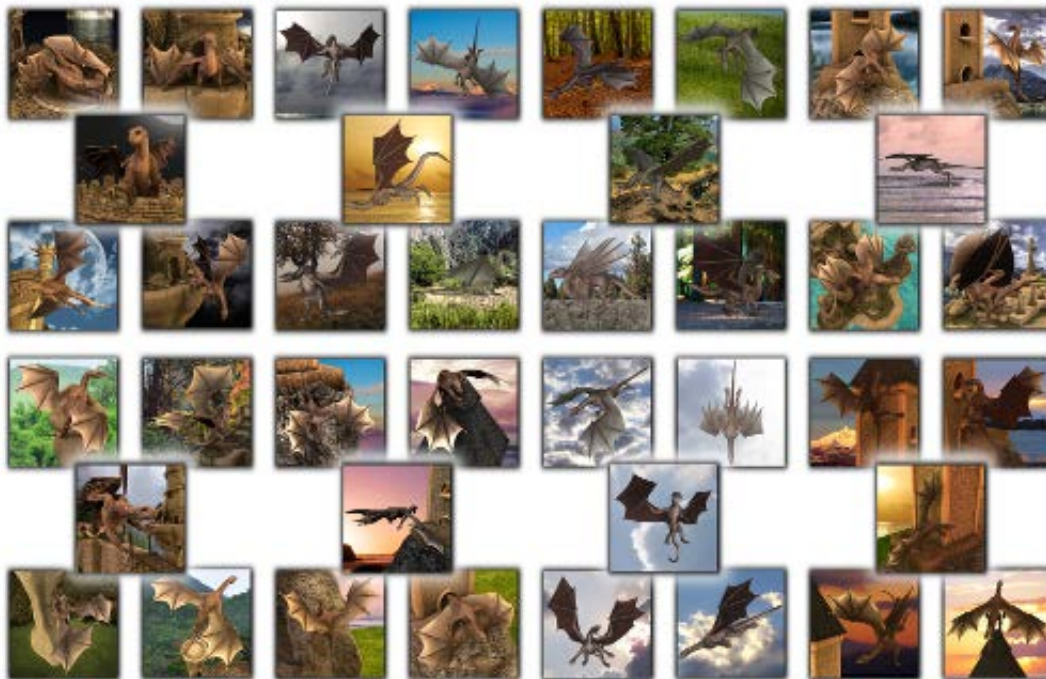


# Dragon Worlds

by

**Winterbrose**  
Arts & Graphics

An original collection of **40** Poses for the **DAZ Dragon 3** including 24 customized poses designed specifically for use with the *Dragon Island* and *Dragon's Tower* prop sets from DAZ 3D.



The following sections describe where to find the poses and props in the DAZ Studio 4.6 Content Library.

## FINDING THE POSES

### Dragon Worlds poses (40):

All 40 poses for the Dragon Worlds set can be found in the "Dragon Worlds" folder located in the "Poses" folder for the "DAZ Dragon 3".



DAZ Studio Formats  
  `--- My DAZ 3D Library  
    `--- Animals  
      `--- DAZ Dragon 3  
        `--- Poses  
          `--- Dragon Worlds

---

### Dragon Island custom poses (12):

The 12 poses especially designed and translated for use with the Dragon Island prop set can be found in the "Dragon Island" folder under "Dragon Worlds" above.



DAZ Studio Formats  
  `--- My DAZ 3D Library  
    `--- Animals  
      `--- DAZ Dragon 3  
        `--- Poses  
          `--- Dragon Worlds  
            `--- Dragon Island

*NOTE: When using the following poses with Dragon Island, be sure to Turn Off Limits: Big Tower Lookout / Pillar Sentry / Sleeping*

---

### Dragon's Tower custom poses (12):

The 12 poses especially designed and translated for use with the Dragon's Tower prop set can be found in the "Dragon Tower" folder under "Dragon Worlds" above.

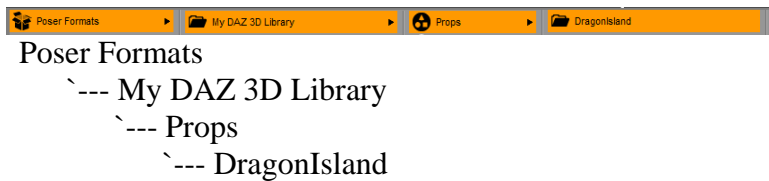


DAZ Studio Formats  
  `--- My DAZ 3D Library  
    `--- Animals  
      `--- DAZ Dragon 3  
        `--- Poses  
          `--- Dragon Worlds  
            `--- Dragon Tower

## FINDING THE PROPS

The Dragon Island prop set is located in the Poser Formats folder. The customized poses for Dragon Island are designed to be used with the "!Dragon Island Scene" preconfigured scene. Load the scene; load the DAZ Dragon 3, then with dragon selected load the desired pose from the Dragon Worlds D.I. folder.

Dragon Island



---

The Dragon's Tower prop set is located in the DAZ Studio Formats folder. The customized poses for Dragon's Tower are designed to be used with the "Rock+Tower" preconfigured scene. Load the scene; load the DAZ Dragon 3, then with dragon selected load the desired pose from the Dragon Worlds D.T. folder.

Dragon's Tower

