

# POSE BUILDER

## FOR VICTORIA 4.2 & MICHAEL 4



DAZStudio™  
script



# Pose Builder for V4.2 and M4

This product supports Victoria 4.2 and Michael 4.

Poses that are not in DS .duf format will be converted to .duf format when selected. You will momentarily see V4.2 or M4 assume the selected pose and go back to the previous pose they were in.

You will be able to save your poses in .duf or .pz2 format.

Split\partial pose sets can only be used if the full body option is selected. The script might have an issue choosing already split pose options. Since the script already does splitting\partial poses for you, selecting the full pose option is recommended.

Pose sets created with this product can be sold only if the poses used are of your own creation. You may not mix and match poses from other Vendors\PA's and re-sell unless permission is give.

Pose Builder is a power script that enables you to zero out different parts of a pose, and lets you add in different parts of poses from pose sets compatible with V4.2 and M4.

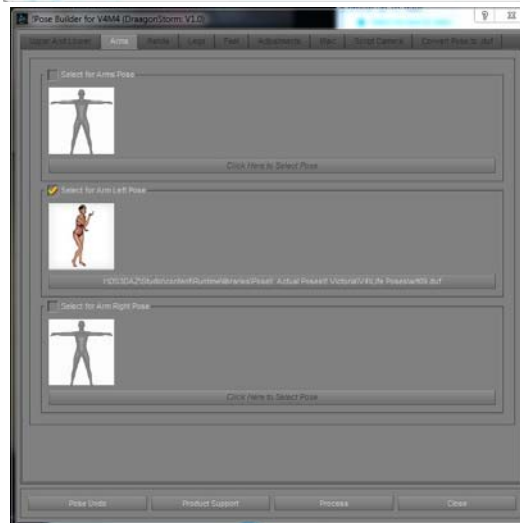
The script has 5 tabs that cover different groups of the body to assign poses to from pose presets. Click on the group you want the pose assigned to, and then press the button in that group. This will open a window for you to navigate to pose preset to select. You will see the icons of the pose presets.

Note when you press the process button all groups the have check marks will be used to create the new pose.

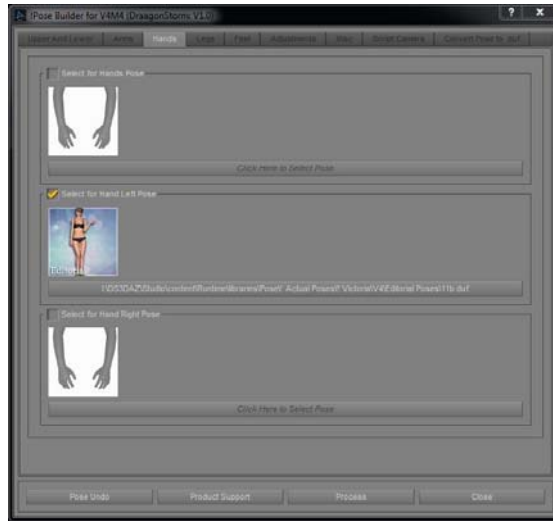
- Upper and Lower



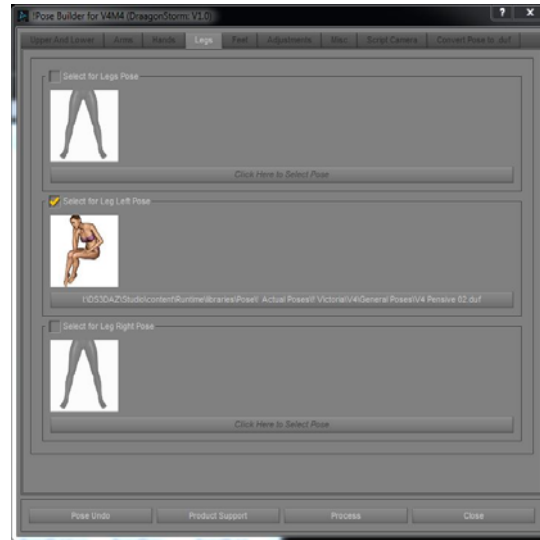
- Arms



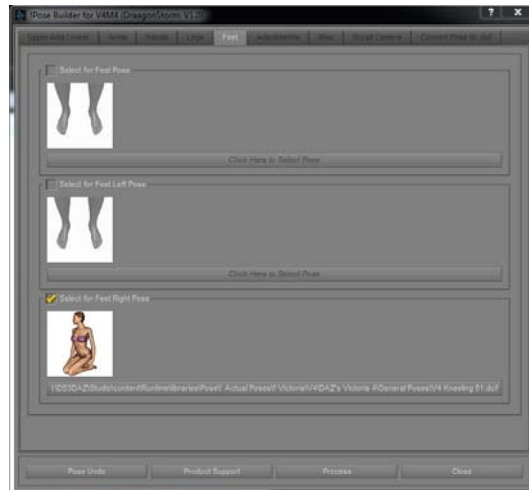
- Hands



- Legs



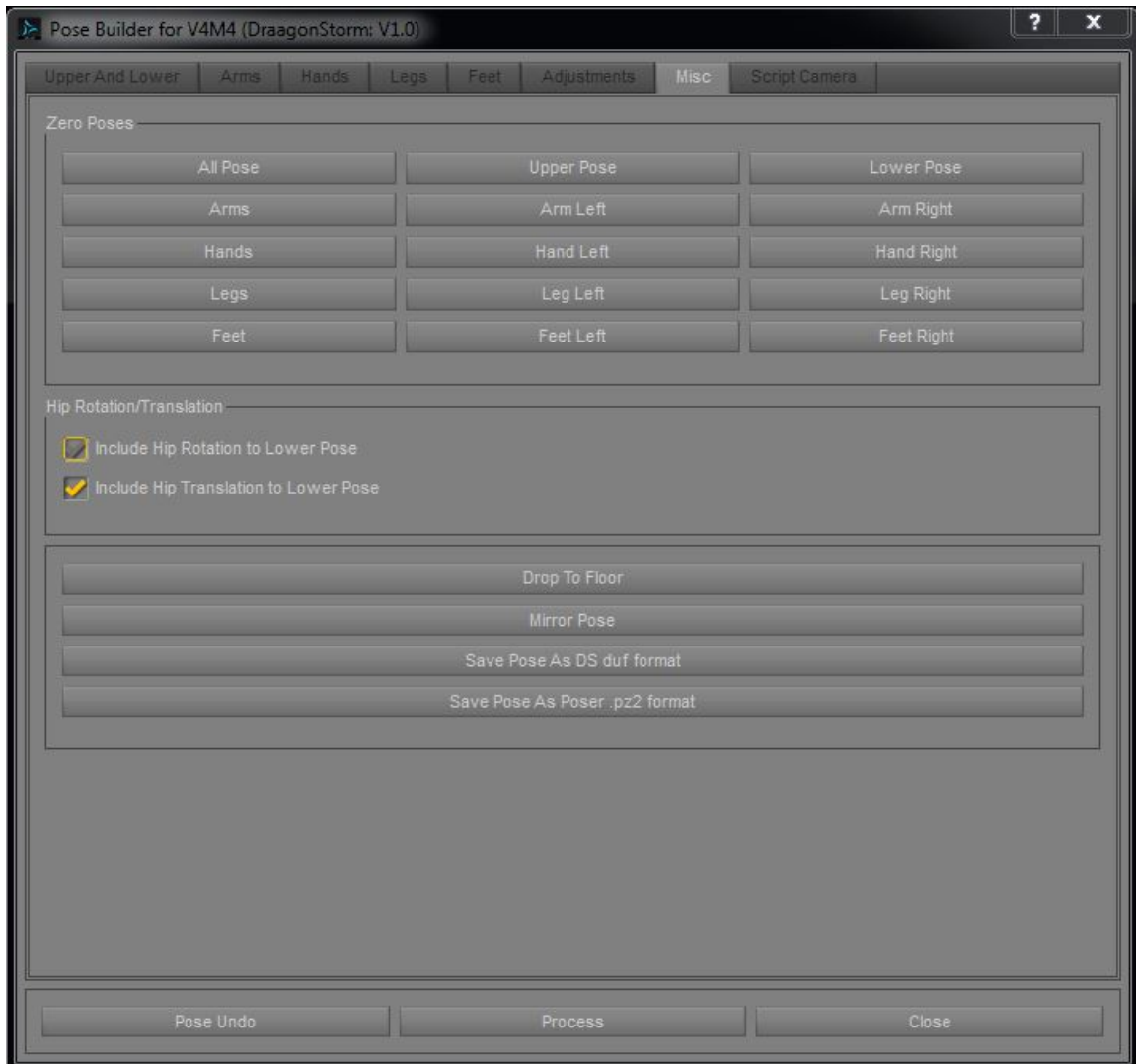
- Feet



There is a tab for Adjustments

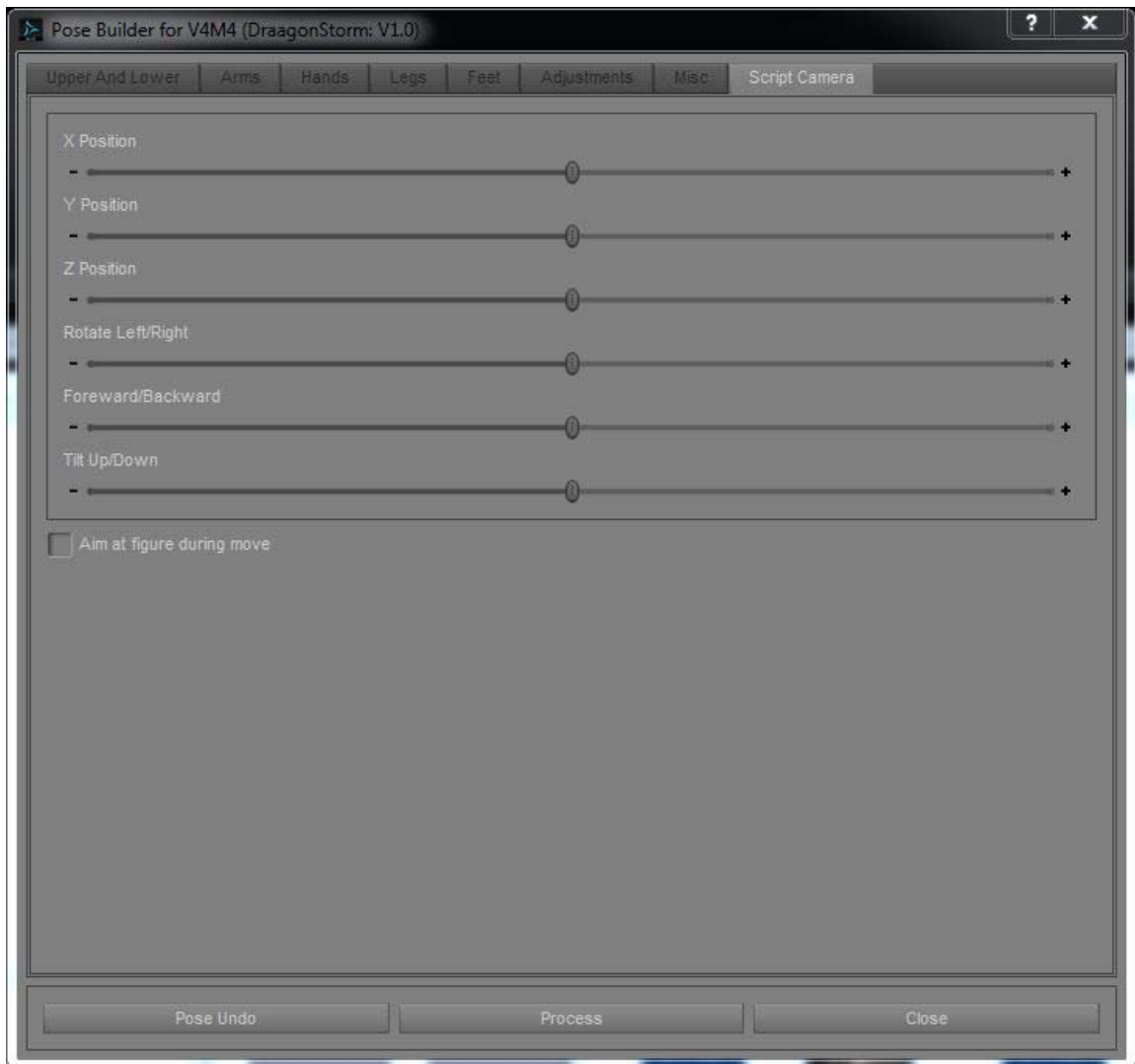


## A Misc tab:



And a tab to move the camera.

This tab has two modes. One is normal camera movement, the other always aims toward the figure. You can also use the Hip rotation under the Adjustment Tab to assist in getting the camera to work for you.





**Thank You  
DragonStorm**