

Fit Control Tutorial



SCRIPT REFERENCE USED

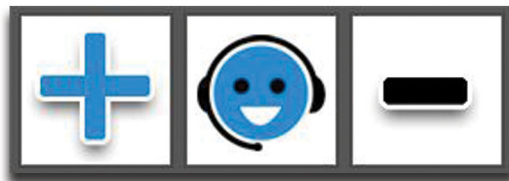
http://docs.daz3d.com/doku.php/public/software/dazstudio/4/referenceguide/scripting/api_reference/samples/properties/node_properties/start

PRODUCT SPECIFICATIONS

This Product only supports Genesis, Genesis 2 Female.
Supports any clothing auto-fitted to Genesis or Genesis 2 Female.
This product only works with Daz 4.7 and above.

PRODUCT LOCATION

Genesis - People\Genesis\Clothing\Fit Control
Genesis 2 Female - People\Genesis 2 Female\Clothing\Fit Control



Thank you for your support and we hope you enjoy using this product.

DISCOBOB



Fit Control Tutorial

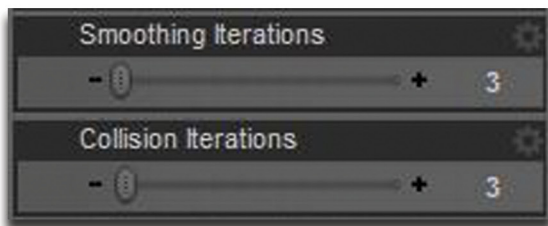
GETTING STARTED

To use Fit Control the start up process is fairly easy.

1. Load your figure.
2. Load desired clothing sets onto figure via Auto-Fit.
3. Set smoothing and collision detection on for clothing items.

Some of the product morphs require this to be active. If your clothing does not have smoothing enabled you can add it by doing the following:

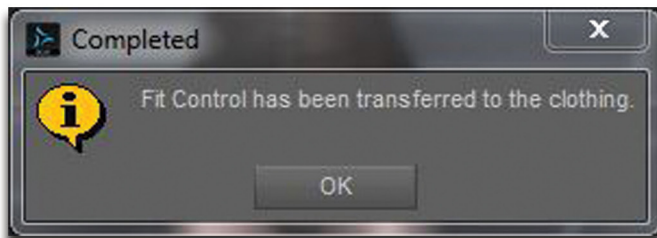
Select clothing Item, go to Edit Menu-> Object -> Geometry -> Apply Smoothing Modifier. Once applied, set the following values to get started (you may change them to your liking)



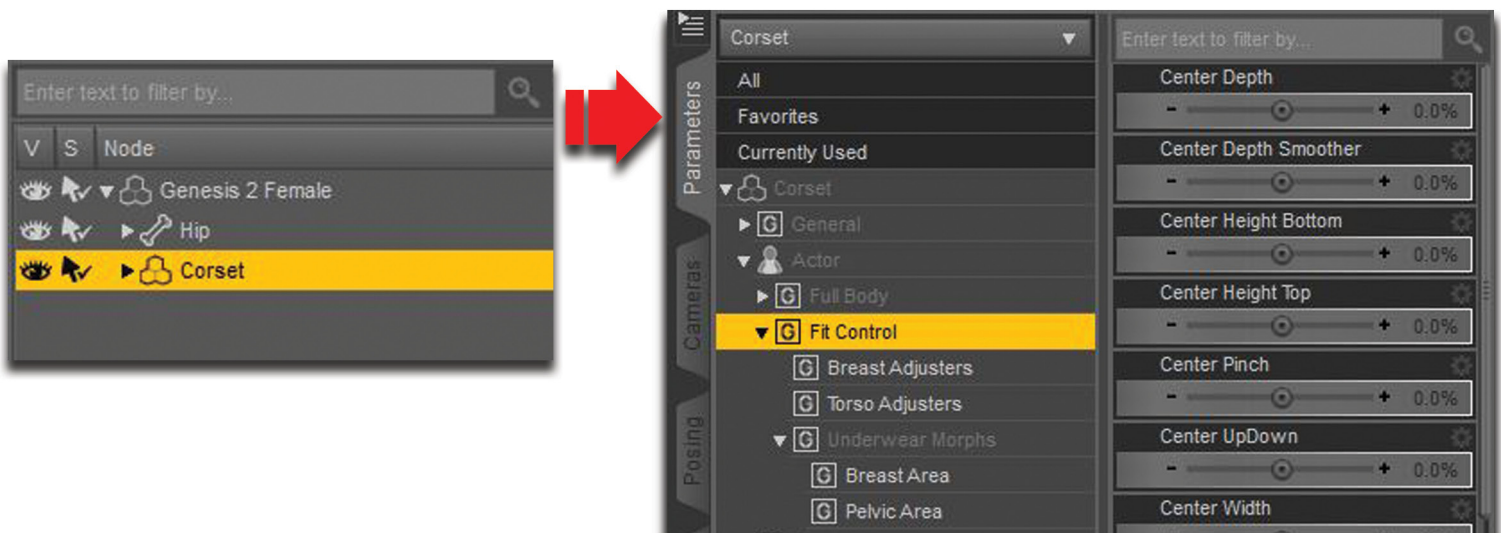
To Activate Fit Control, Select the figure that the clothing is loaded onto and click on the script Icon



The following message will appear



Once you have the clothing item selected from the scene, go to Parameters\Actor\Fit Control. The product is now ready for use.



The following section covers the morphs and what their functions are.

Fit Control Tutorial

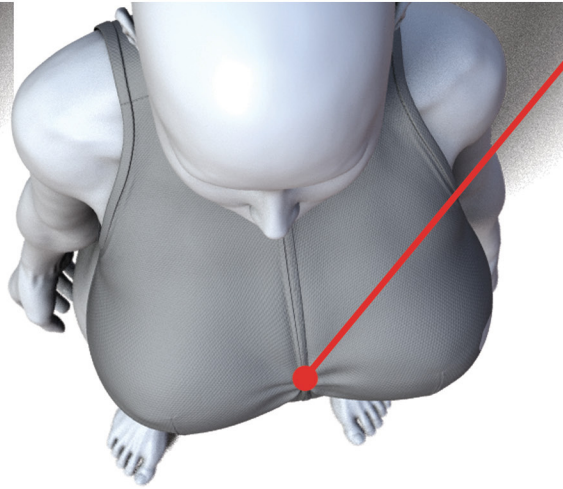
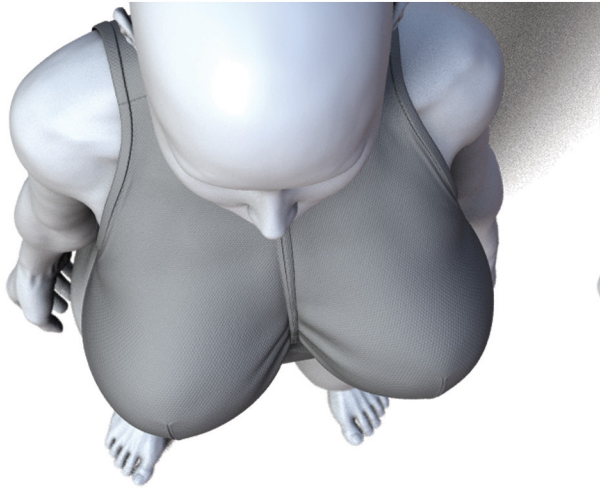
BREAST ADJUSTER MORPHS

The main function of these morphs are to reduce the shrink wrap effect of clothing around the breast area.

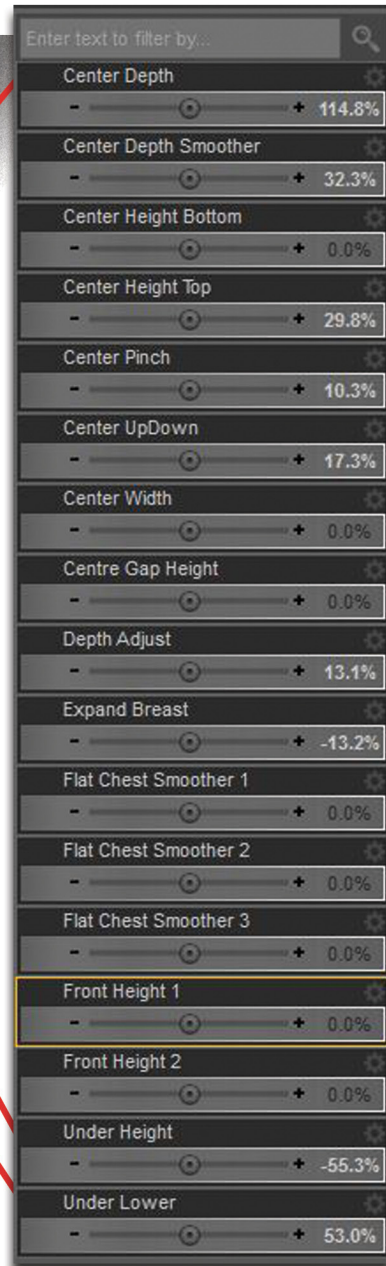
Here is an example of the morphs used and the results. The most important morph is the Center Depth morph. This pulls the area between the breasts outwards. The other important morphs are the Under Height and Under Lower morphs. Their aim is to eliminate the shrink wrapping under the breasts. The other morphs are mainly supporters to help these out.

Before

After



Morphs used



When using the Under Height and Under Lower morphs together, The Under Height must roughly reflect the Under Lower morph value, but in the negative. They do not always have to follow this rule, but in most cases they produce nice results in reducing the under breast fold.

Values will vary depending on the breast morphs used, so this example is not a golden rule, but more of a starting point to understand how the morphs work.

Fit Control Tutorial

TORSO ADJUSTER MORPHS

The main function of these morphs are to reduce the shrink wrap effect of clothing on the torso area.

These are pretty straight forward to use and are mainly designed to make minor adjustments. They are particularly useful if the clothing set does not contain any fitting morphs or if you want to stack mutiple clothing on top of each other.

Before



After



Morphs used

Expand All	-	+	120.3%
Hip Length	-	+	0.0%
Hip Loosen All	-	+	99.2%
Hip Loosen Sides	-	+	0.0%
Loosen Armpits	-	+	0.0%
Loosen Back	-	+	106.9%
Loosen Belly	-	+	0.0%
Loosen Collars	-	+	0.0%
Loosen Front	-	+	56.8%
Loosen Side L	-	+	0.0%
Loosen Side R	-	+	0.0%
Spine Adjust Bottom	-	+	0.0%
Spine Adjust Top	-	+	0.0%
Sternum Height	-	+	0.0%
Straighten Back	-	+	0.0%
Straighten Sides	-	+	0.0%

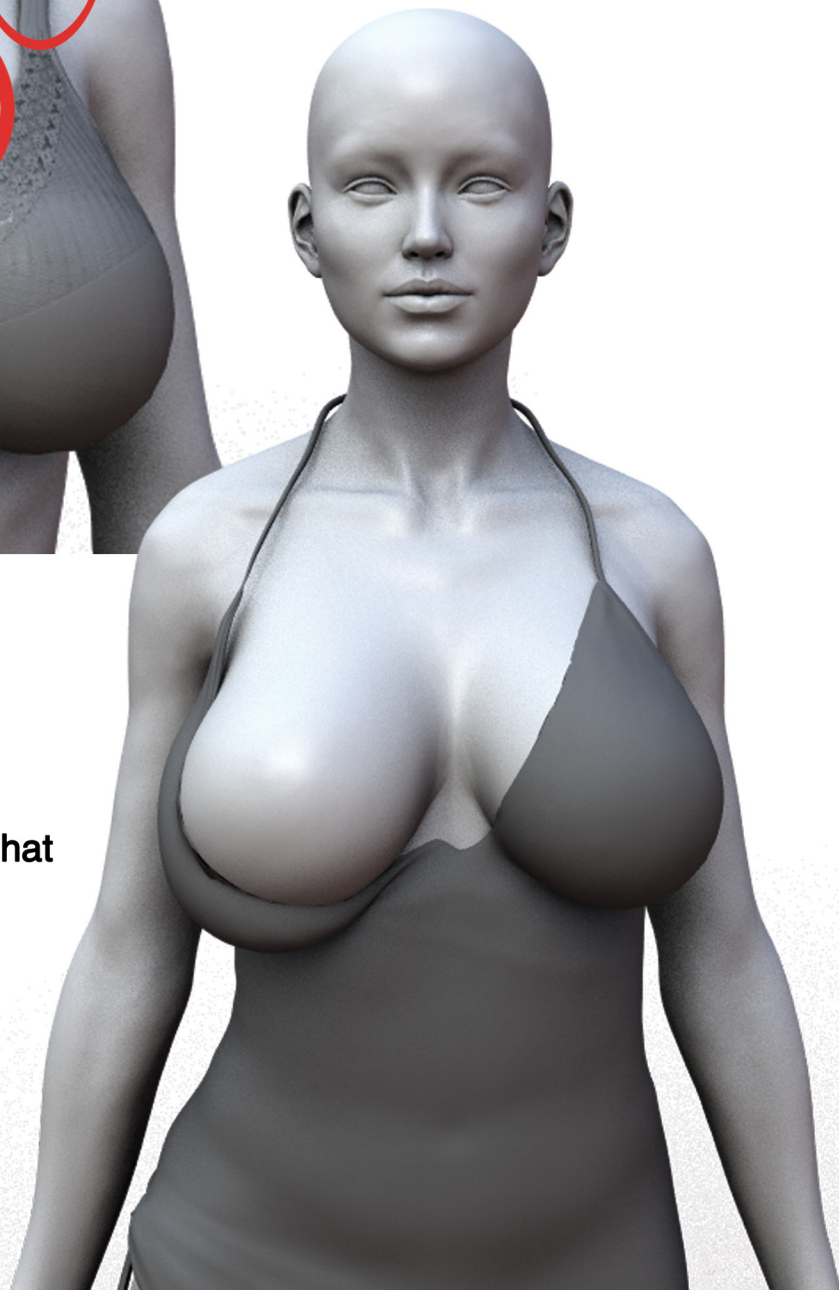
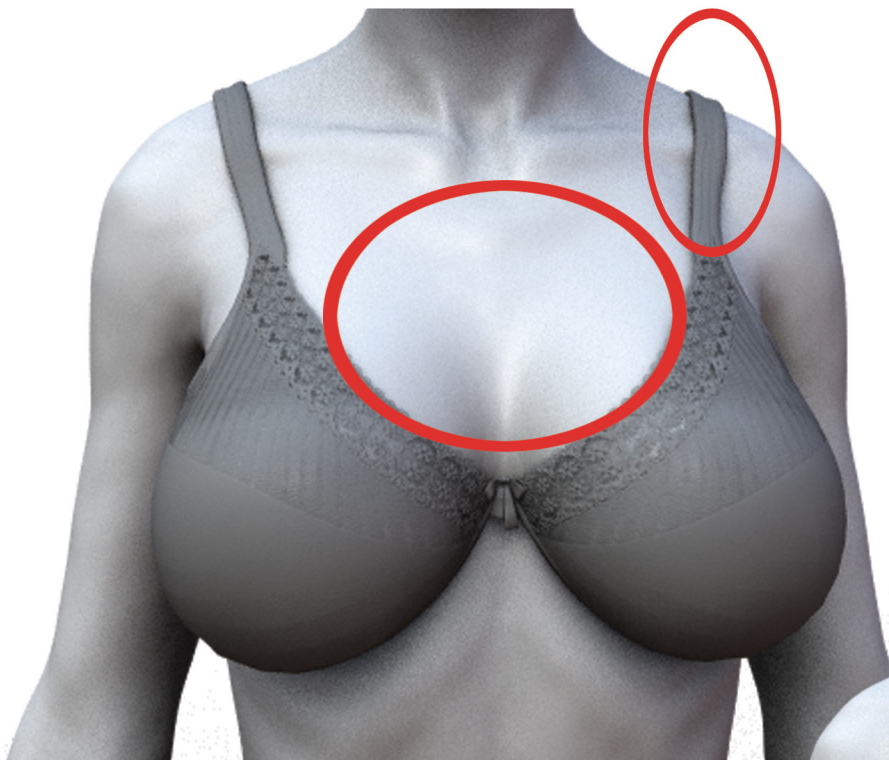
Fit Control Tutorial

UNDERWEAR BREAST MORPHS

The main function of these morphs are to give added functionality to clothing such as bras or other strapped tops.

However, these morphs are only compatible with certain design types. If the morphs are applied to clothing that do not match the style, undesired results can occur. Some of the morphs can be used such as the Show Breast morphs if the area on the chest has enough skin exposed.

Here is an example of the clothing style these morphs are designed for.



Here is an example of a dress with similar features meaning some of the morphs are compatible. Here we see that the Show Breast morphs still work.

Fit Control Tutorial

UNDERWEAR PELVIC MORPHS

The main function of these morphs are to give clothing such as panties or swimwear added functionality.

However, these morphs are only compatible with certain design types. If the morphs are applied to clothing that do not match the style, undesired results can occur. For the Pelvic Morphs you require underwear or swimwear with thin waist straps and narrow crotch coverage. Some morphs are universal such as the Rear Loosen, Rear Down, Front Pull and Front Down Morphs, which can work on long pants or shorts.

Here is an example of the clothing style these morphs are designed for.



That about covers the tutorial. We hope you find this product useful.

Please send any comments or feedback by clicking on the product support icons.

DISCOBOB

