



**RENDERSTUDIO 2014 – RENDERSTUDIO PRODUCTION SCENES...**

## **Welcome...**

***“Of course, there will always be those who look only at technique, who ask ‘how’, while others of a more curious nature will ask ‘why’. Personally, I have always preferred inspiration to information.”***

-Man Ray...

No matter how popular my lighting sets become some users still have trouble getting the right combination of lights in their scenes. This is very understandable and this is where this set of production scenes come into play.

Not only will it give you the exact same lighting and environment solution that I used in my renders but if we look at what is actually going on in the scene we can learn 'why' it is there. Then we can apply our own insight to our technique and get much closer to our final production goals.

This set includes ten of what I consider the best renders that I produced so far for my RenderStudio 2014 project.

It is very simple to use and there are only a few small things to remember....

## So let's start...!

The first thing to remember is if you are a Poser 8/Poser 2010 user you will need to load the scenes manually.

**ONLY USE THE 'File>Open' COMMAND....** Never use the 'File>Import>Poser Document' command...!!! If you do you will be importing one scene on top the other and all you will get is 'YUK' and I will get loads of support emails.:-)

HOWEVER.... **Poser 8/Poser 2010 users still have to install the runtime** into their version of Poser for the supporting props and texture files to load correctly.

The second thing to remember is if you are a Poser 9/ Poser 2012 or higher user, once you have installed the product in your runtime you will have all the scenes show in your 'Scene' library within Poser itself.

Once you have the files showing in your scene library it's time to load one:

In the 'Scene Library' select the file you wish to load and '**ONLY USE THE SINGLE CHECK-MARK**' to load it into the Poser workspace. The Double check-mark will import it.... More YUK!!!!

Each scene is set up exactly as I used it in my renders minus all the props and figures that I can not give away in this product as they are someone else's intellectual property. So you will have to populate the scenes yourself with your favourite figures and props.

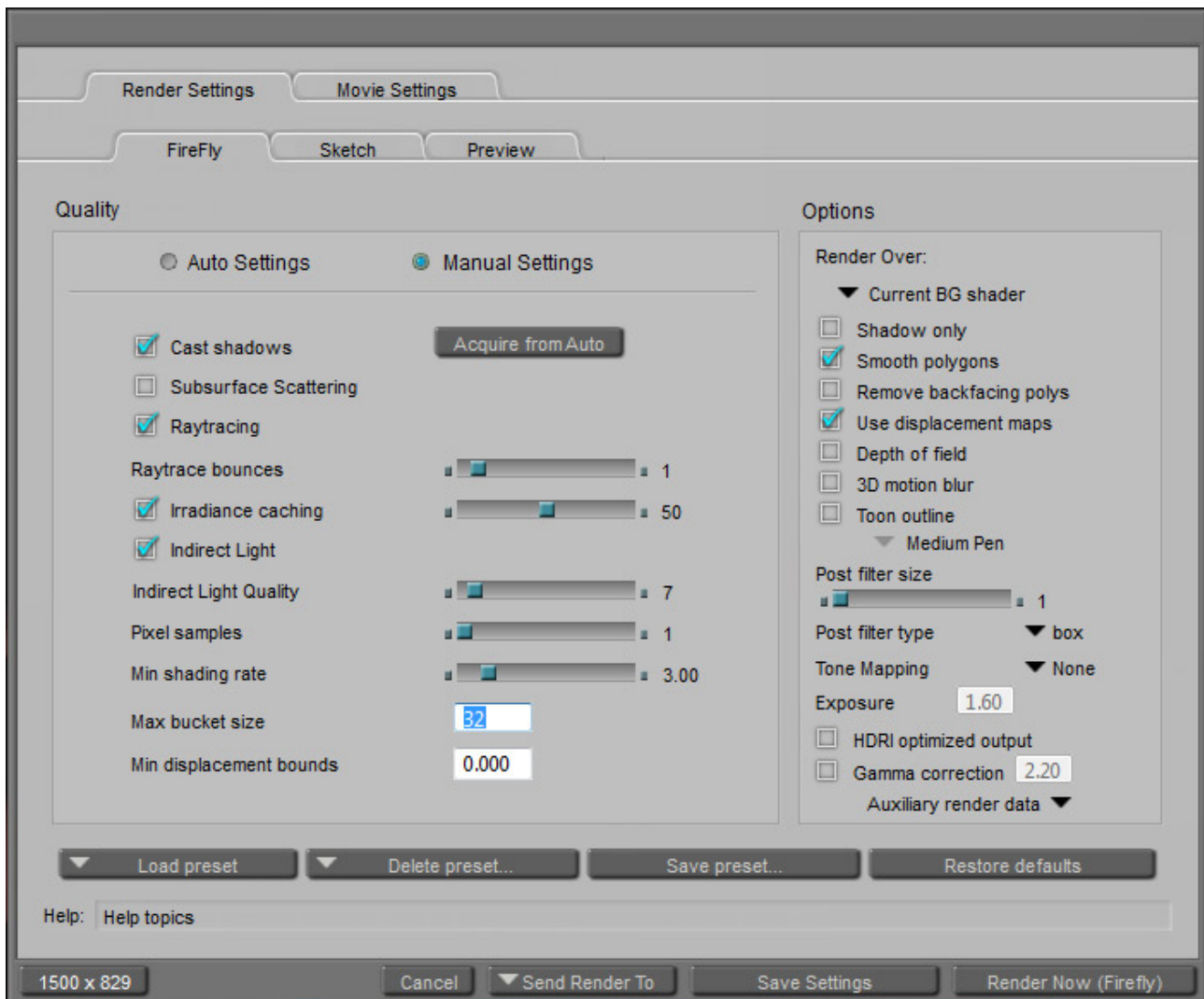
Below I have supplied you with images of the final renders that I created with these files so as you can get a better idea of what you can do. In some scenes the positioning of the figures is extremely important and in some like the IDL Dome and IBL scenes it is not so important. Don't be afraid to move things around. I have put a 'Memorise' command in each scene so you can restore lights etc to where they were when you loaded the file just in case you get lost.

One last thing to remember.... Each scene has been set up with the render settings that I use for the worst possible quality I can get in Poser. Why? Because if you leave the hair out of the scene or make it invisible to the camera the test renders will fly really fast. Don't worry though... I have included these and my production render settings at the end of this document for you to copy and use. You can then save the render settings for future use.

If you have any questions regarding this product please contact me at [colm@colmjackson.com](mailto:colm@colmjackson.com).

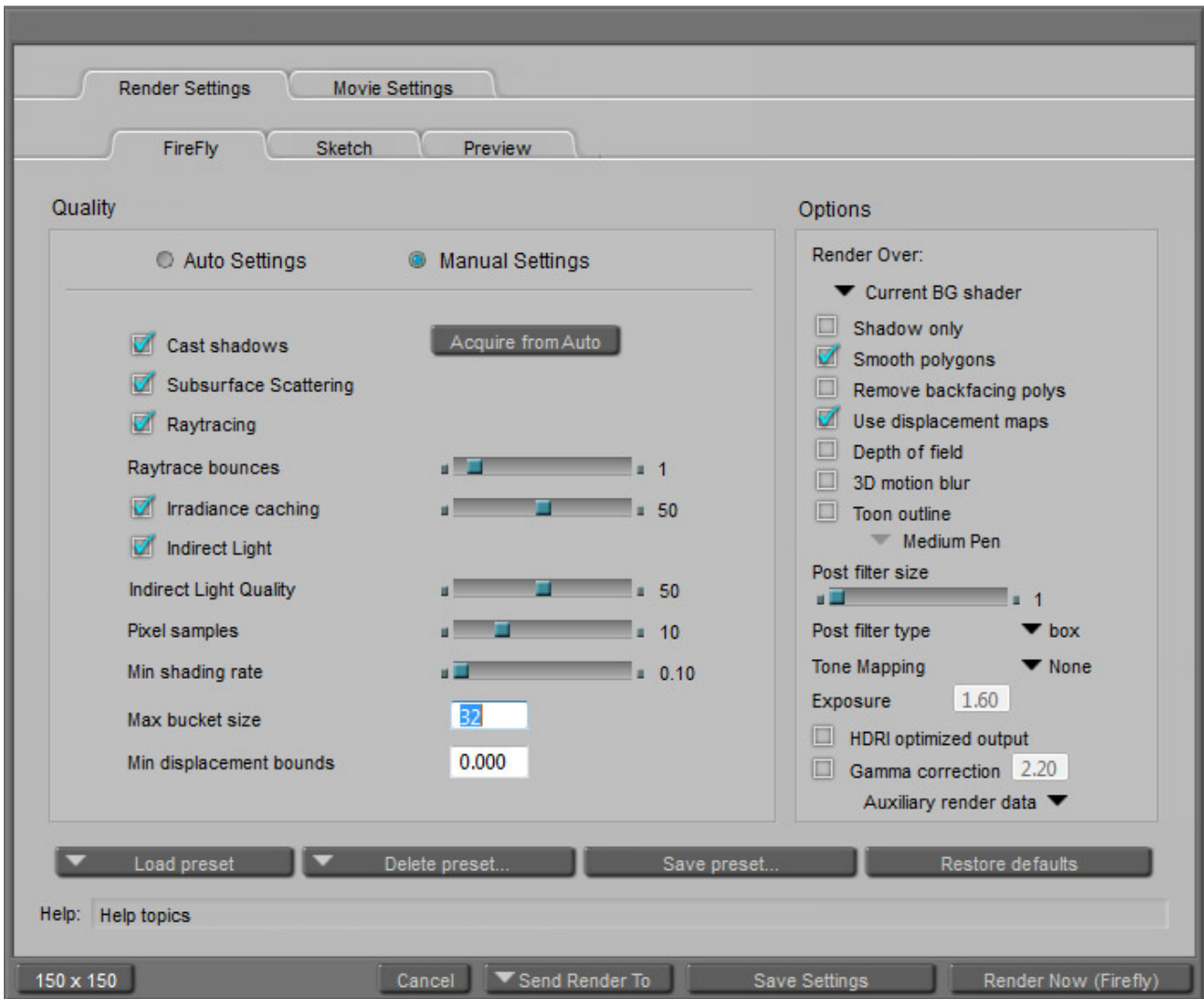
Colm.:-)

## My really awful quality render settings...



See next page..

This is what I use for my final high quality renders...



On the following pages I have listed in order all the ten scenes and the corresponding renders that I created with them.... Please remember that these renders have had some production post work done on them. Levels have been adjusted and on some, colour saturation and blurring have been added or subtracted....

Scene\_01



Scene\_02



Scene\_03



Scene\_04





Scene\_05



Scene\_06



Scene\_07



Scene\_08



Scene\_09



Scene\_10

