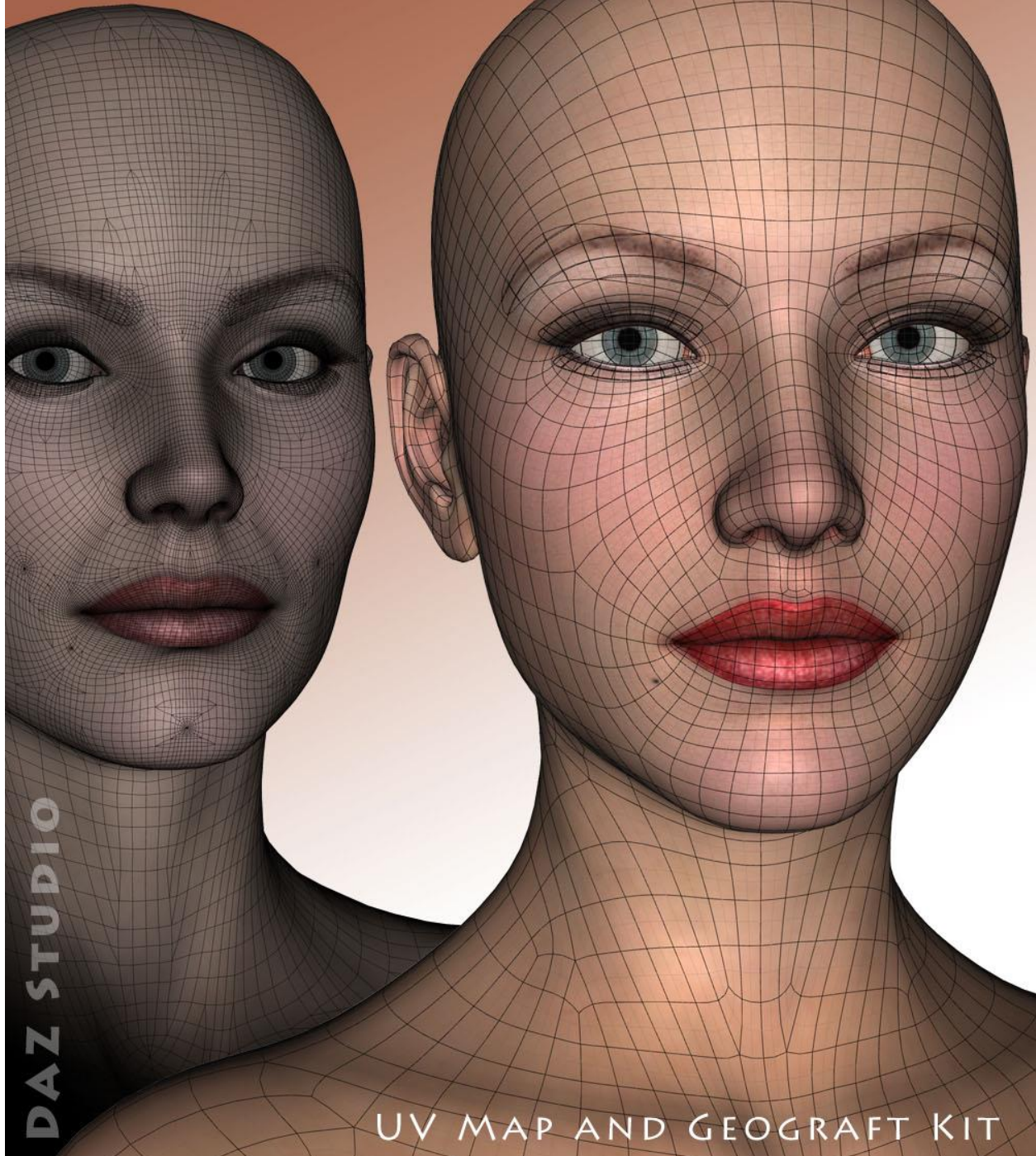


Legacy UVs for Genesis 3: Special Edition - Victoria 3

**LEGACY UVs FOR GENESIS 3**

**SPECIAL EDITION**

**VICTORIA 3**



DAZ STUDIO

UV MAP AND GEOGRAFT KIT

## Instructions for use

1. Load and select Genesis 3 Female.
2. Click on the '!Prepare G3F for Victoria 3' icon (found in *People: Genesis 3 Female: Anatomy: Legacy UVs – Victoria 3*).

This will load and fit the two geografts and the two attachments, create the Legacy Surface Selection Sets so that legacy Material files will recognise the surface names, and apply a neutral surface material to Genesis 3.

Genesis 3, the geografts and the attachments will also be selected in the Scene panel in readiness for the application of the legacy textures. If you have fitted the Genitalia geograft to Genesis 3, that will be also be prepared and selected. If you wish to add the genitalia at a later stage you must rerun the '!Prepare G3F for Victoria 3' script. You can also rerun the Prepare script at any time to ensure that all the geografts are selected, because the script will check for existing geografts and will not keep loading new ones.

3. Apply the Legacy Material files in the normal way by navigating to the required folders and clicking the icons.

The Material files must be in *.duf* format to work correctly with Genesis 3. You can prepare these yourself by loading the MATs onto Victoria 3, making any desired alterations to the material settings, and then saving them within *DAZ Studio* as Material Presets.

4. Click on the 'Apply Victoria 3 UVs' icon. This will change the UV set for all selected surfaces to 'Victoria 3', and you will now see the Victoria 3 textures aligned correctly on Genesis 3 Female. For subsequent Victoria 3 texture applications you may not need to click on the 'Apply UVs' icon because the UVs will have already been set.

\*

For convenience I have included an optional toolbar which you can load from the 'Components' sub-folder. This will make the icons in the main folder available as buttons which can be easily accessed without having to navigate back and forth between folders

The other icons in the Components folder are *.duf* files for the individual geografts and attachments, the material file for the 'neutral' start surface, and the script which adds the legacy surface names to Genesis 3 and the genitalia. It should not usually be necessary to use any of these directly as they are all run when the '!Prepare G3F for Victoria 3' icon is clicked.

\*