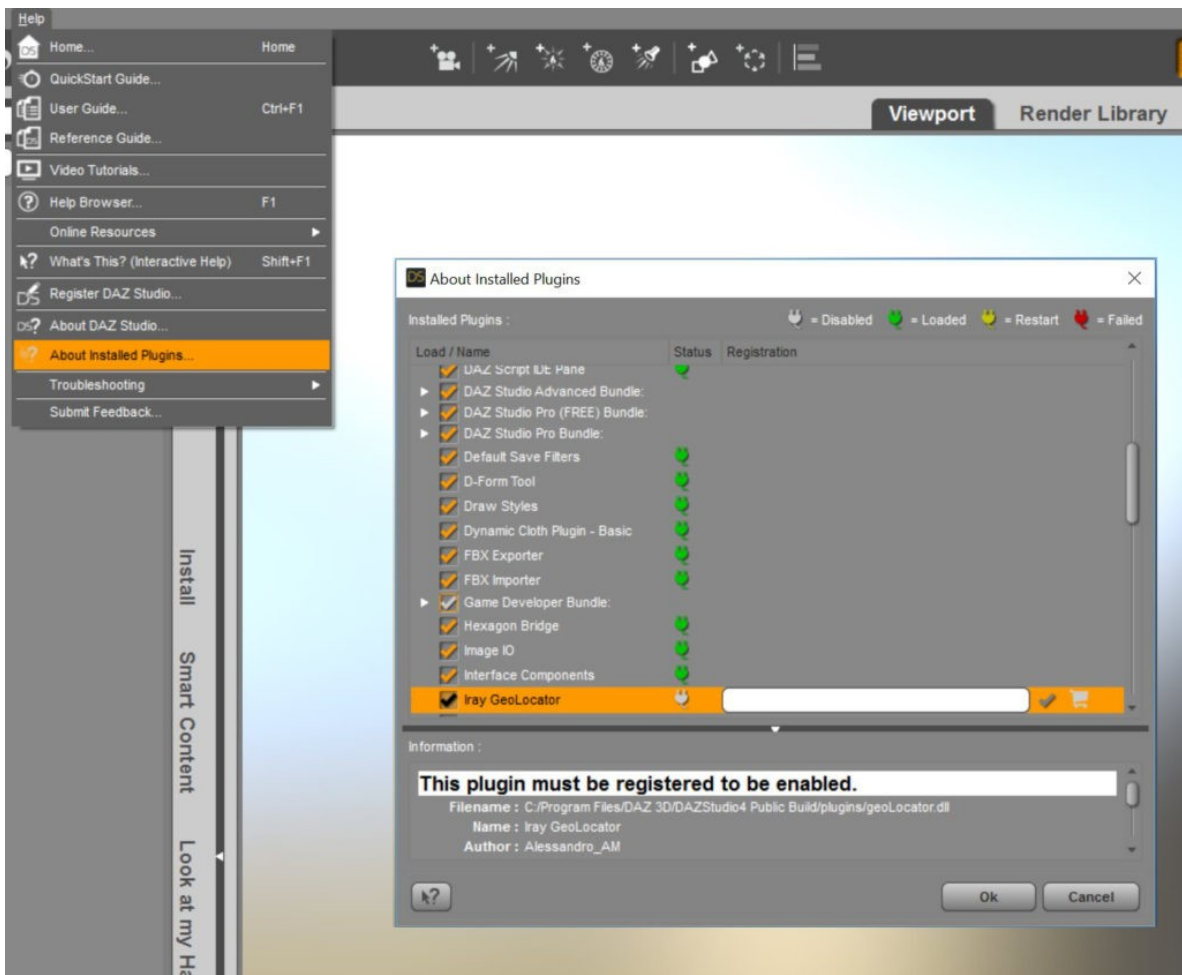




Iray GeoLocator

Please install using the DAZ Install Manager or the standalone installer provided by DAZ 3D.

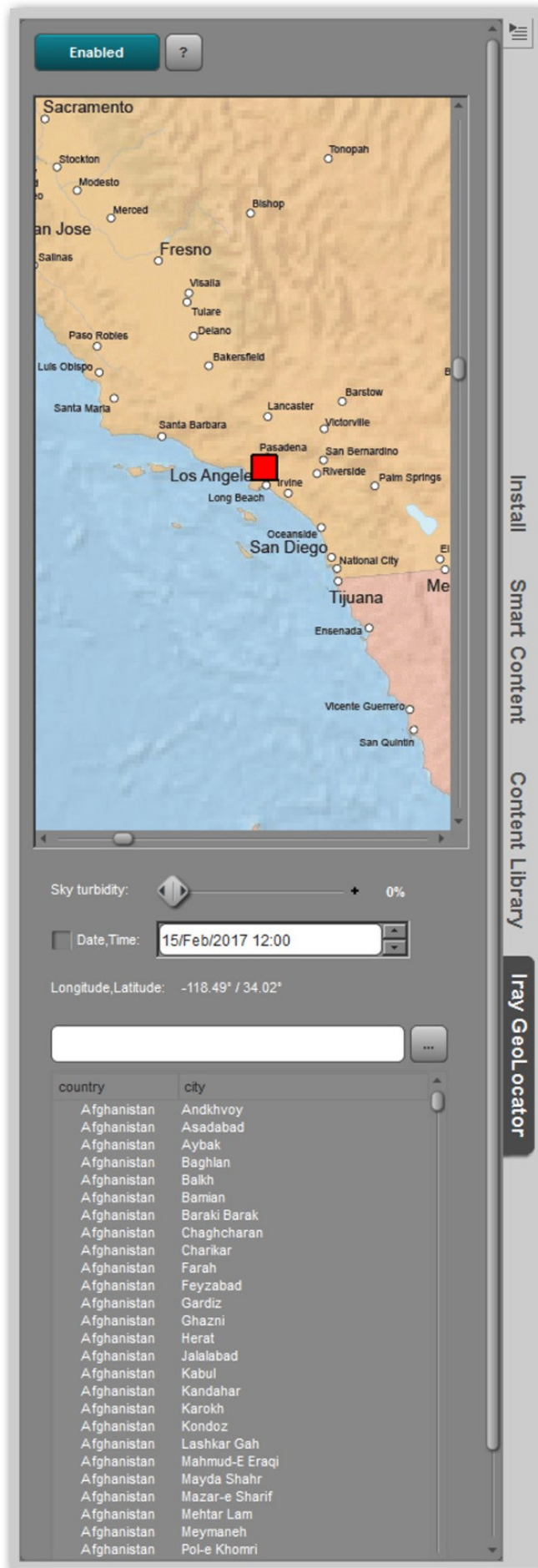
Once installation is done, you need to activate the product: open the **menu link "Help->About Installed Plugins"**, scroll down to **Iray GeoLocator**, copy/paste the Serial Number provided by DAZ 3D (you can find it in your account page); click **OK**, restart **DAZ Studio** and the registration is done.



Activation process from the Help->About Installed Plugins menu link

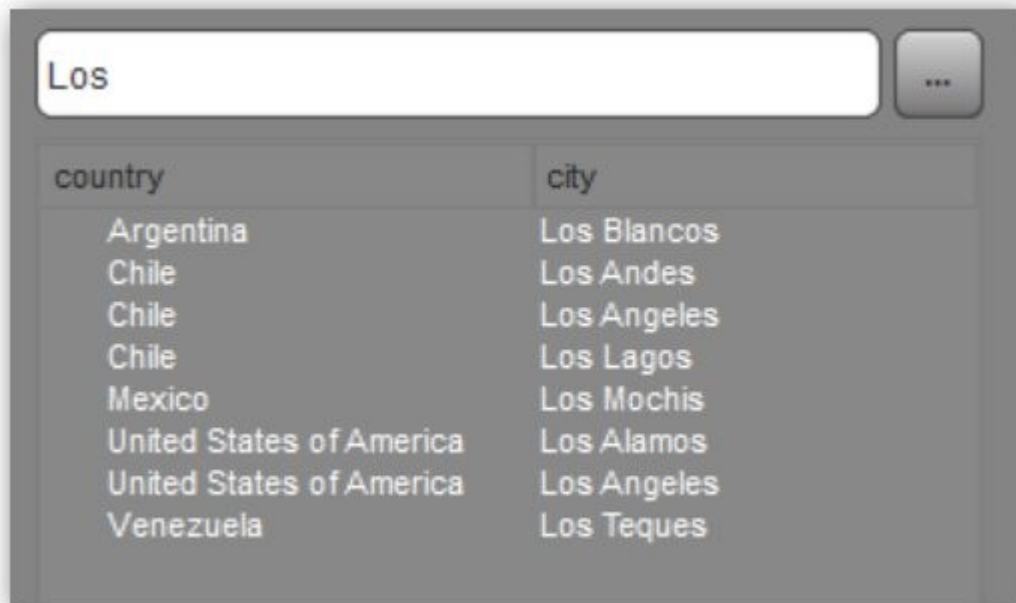
After that, you can open the **Iray GeoLocator** pane selecting it from the menu **Window->Panes->Iray GeoLocator**.

I suggest docking the pane for ease of use. In the following screenshot, the pane docked and ready to use.



Iray GeoLocator pane docked and ready to use

The use is straightforward, you can browse the world map with your mouse, panning in all directions, zooming in and out, and clicking to pick the desired location. Or, if you prefer you can also search a location by typing it directly in the search textbox; for example, if you start typing “Los”, the system will automatically query the database and list the cities containing that text:

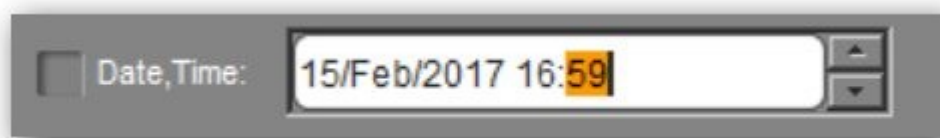


the cities database makes it easy to find specific locations

Once you have picked a location, a red blinking marker will tag it, and all Iray environment settings regarding **longitude**, **latitude**, **time offset** will be automatically set accordingly: if you have the Iray Interactive mode enabled, is pretty cool to see how the sky and lighting will be affected during operations.

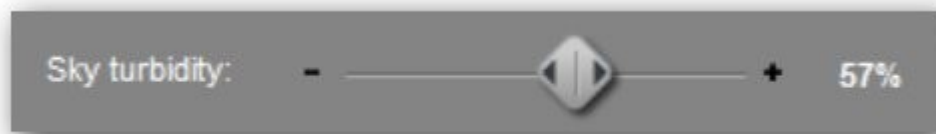
Note that you can also lock the time zone so the current time won't change while browsing the map.

Of course you can also change date and time as you please, through the date/time control widget:



custom date/time setting; the checkbox on the left is used to lock time changes while browsing the world map

Another interesting feature is the possibility to compute approximate atmospheric sky turbidity acting through the related slider:



sky turbidity slider control

Note: you can easily toggle Iray GeoLocator on and off using the Enabled/Disabled button available in the top bar.

If you need further information or support of any kind, please email me at info@alessandromastronardi.com

Thanks
