

# Cybernetic Head for G8 Male

by

Jschaper



**Thank you for your purchase of the “Cybernetic Head for G8 Male” prop.**

**There are a few important things you may want to keep in mind in mind in order to get the most out of this prop:**

1. First thing to remember: With the Genesis 8 figures (both the female and the male), the “Eyelashes” are now a separate prop. The Eyelashes are automatically loaded and parented to the Genesis 8 figure when the figure is loaded into the scene.

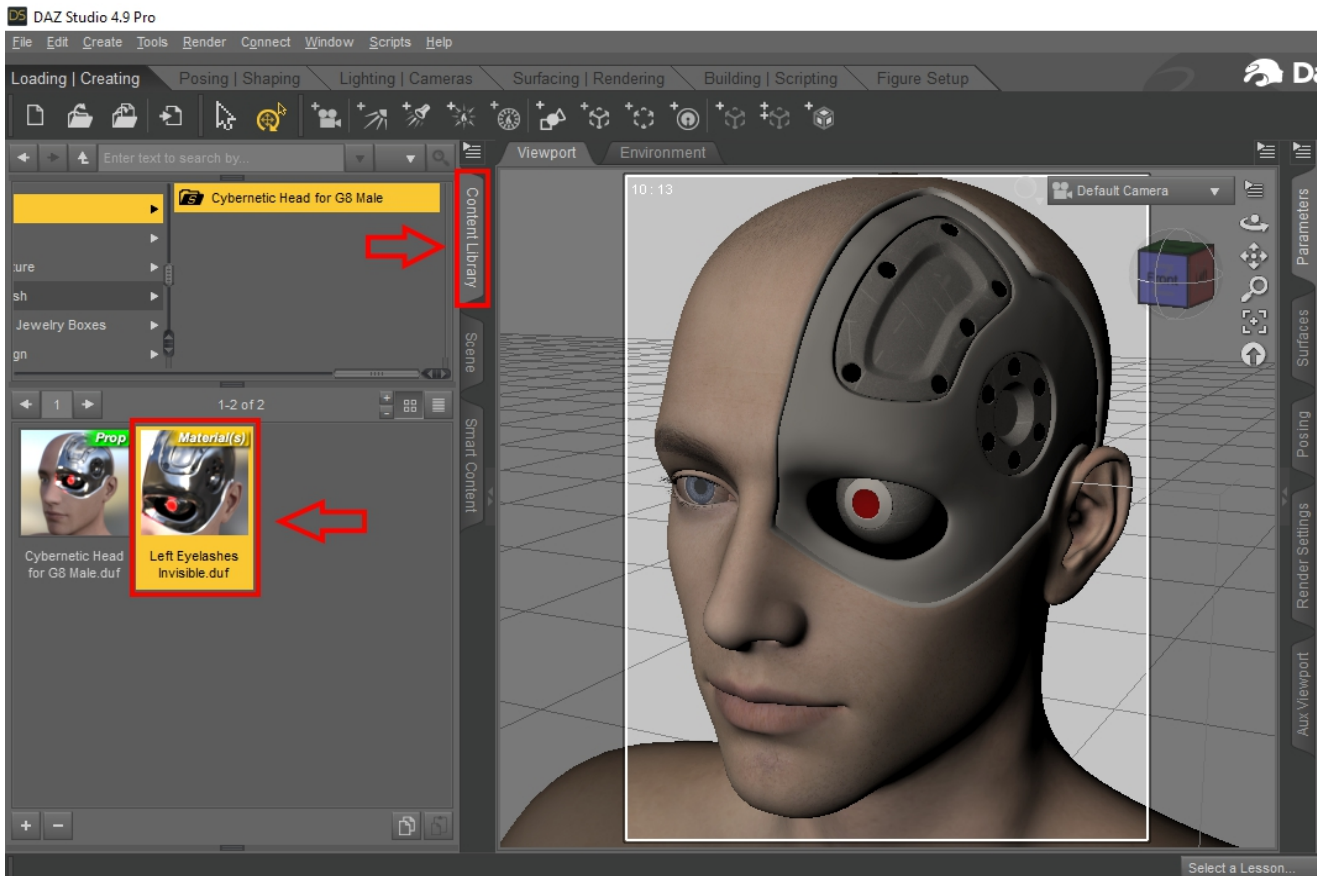
**Question:** So what does this have to do with the use of the “Cybernetic Head for G8 Male”?

**Answer:** When you apply/load the Cybernetic Head prop to your G8 figure, you will notice that the **left eyelashes** are still visible. In order to correct this, a special material (supplied with this product) must be applied to the **Eyelashes** in order to make the left eyelashes invisible, while leaving the right eyelashes visible.

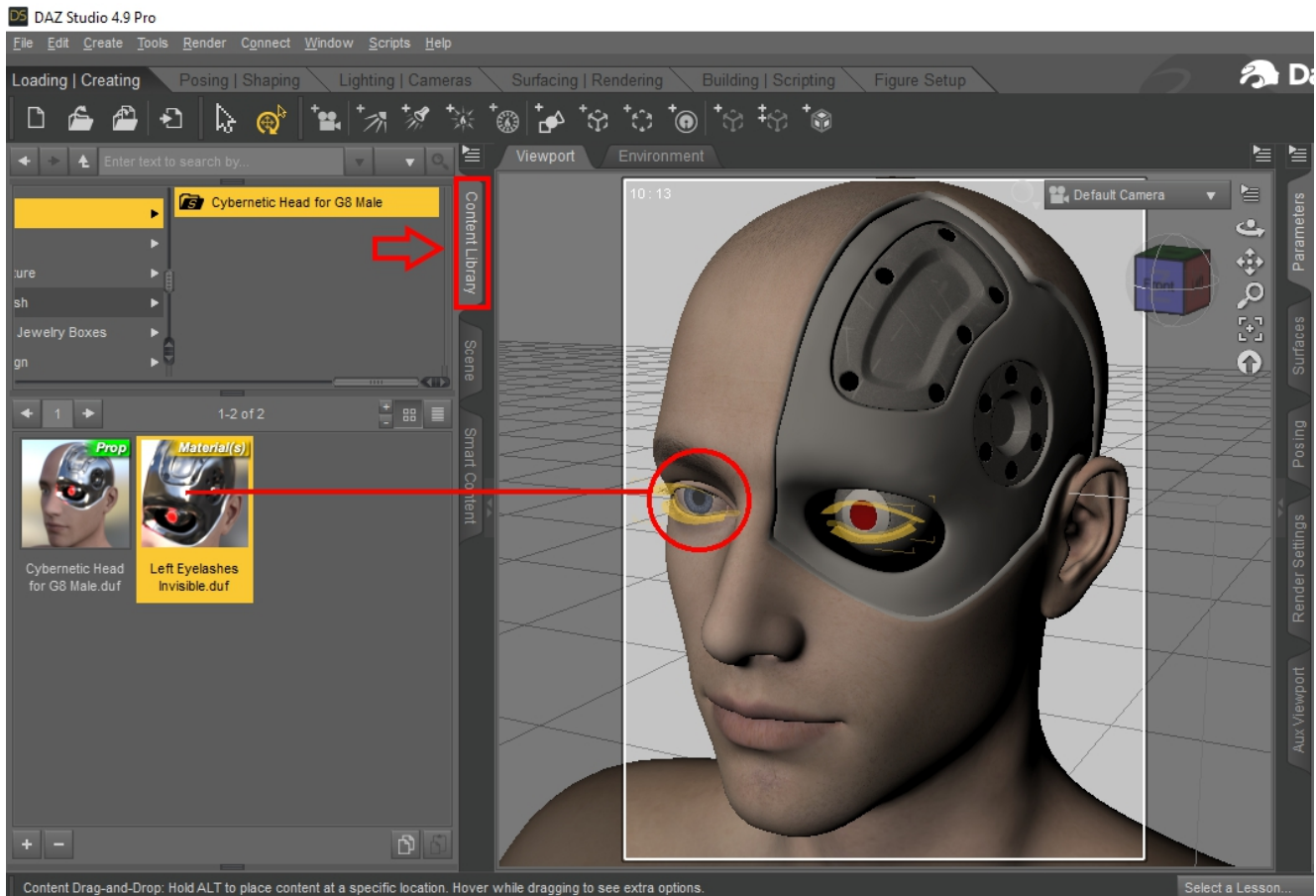
Here follows two methods on how to apply the “**Left Eyelashes Invisible**” material, just in case you didn't already know ;-)

## Method 1:

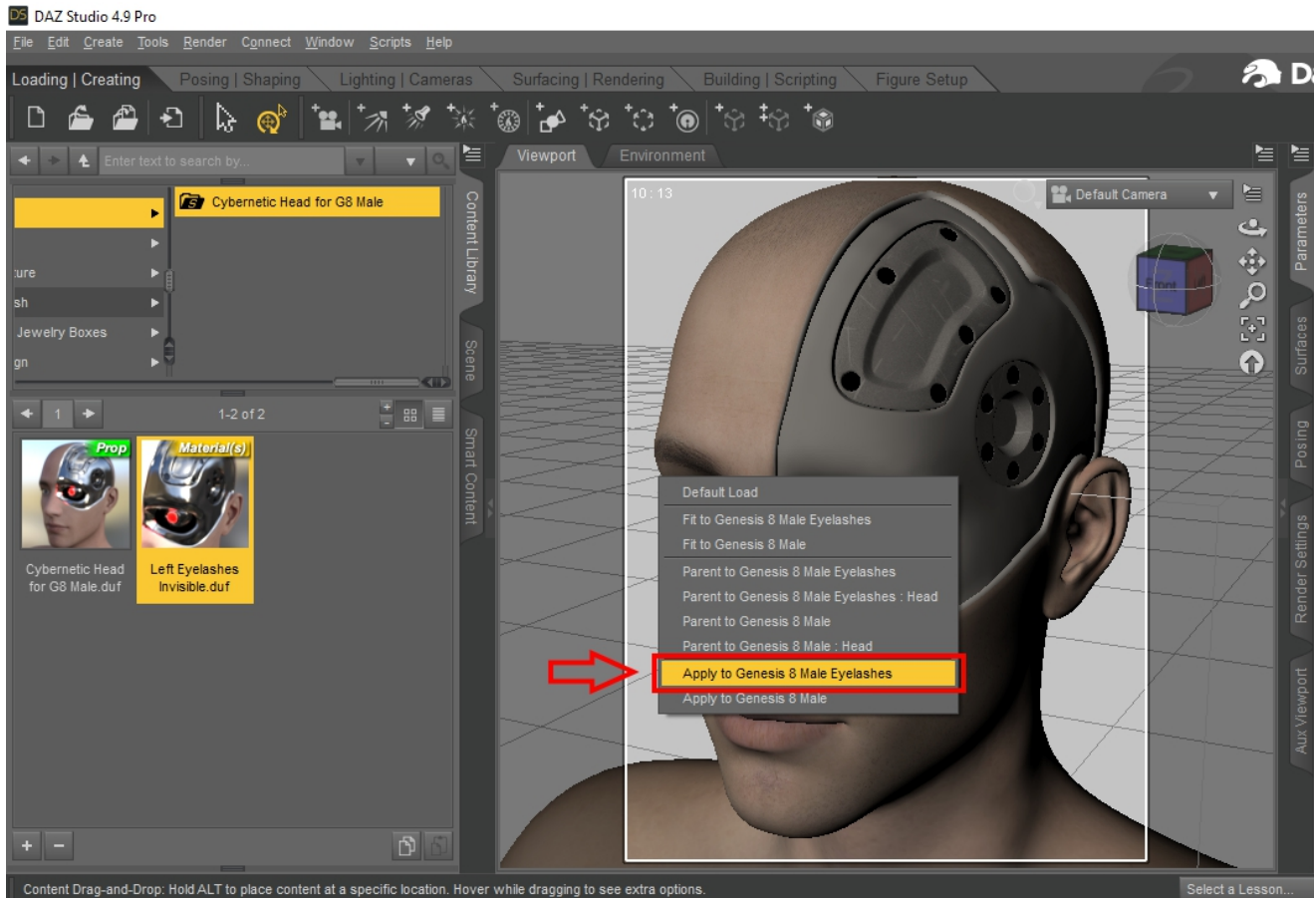
- Find the **“Left Eyelashes Invisible”** material in your Content Library. See image below.



- Now click on the “Left Eyelashes Invisible” material, and while holding the mouse-button down, drag it into the view-port, making sure to highlight the G8 Male's eyelashes. (Remember to hold the mouse-button down). See image below.

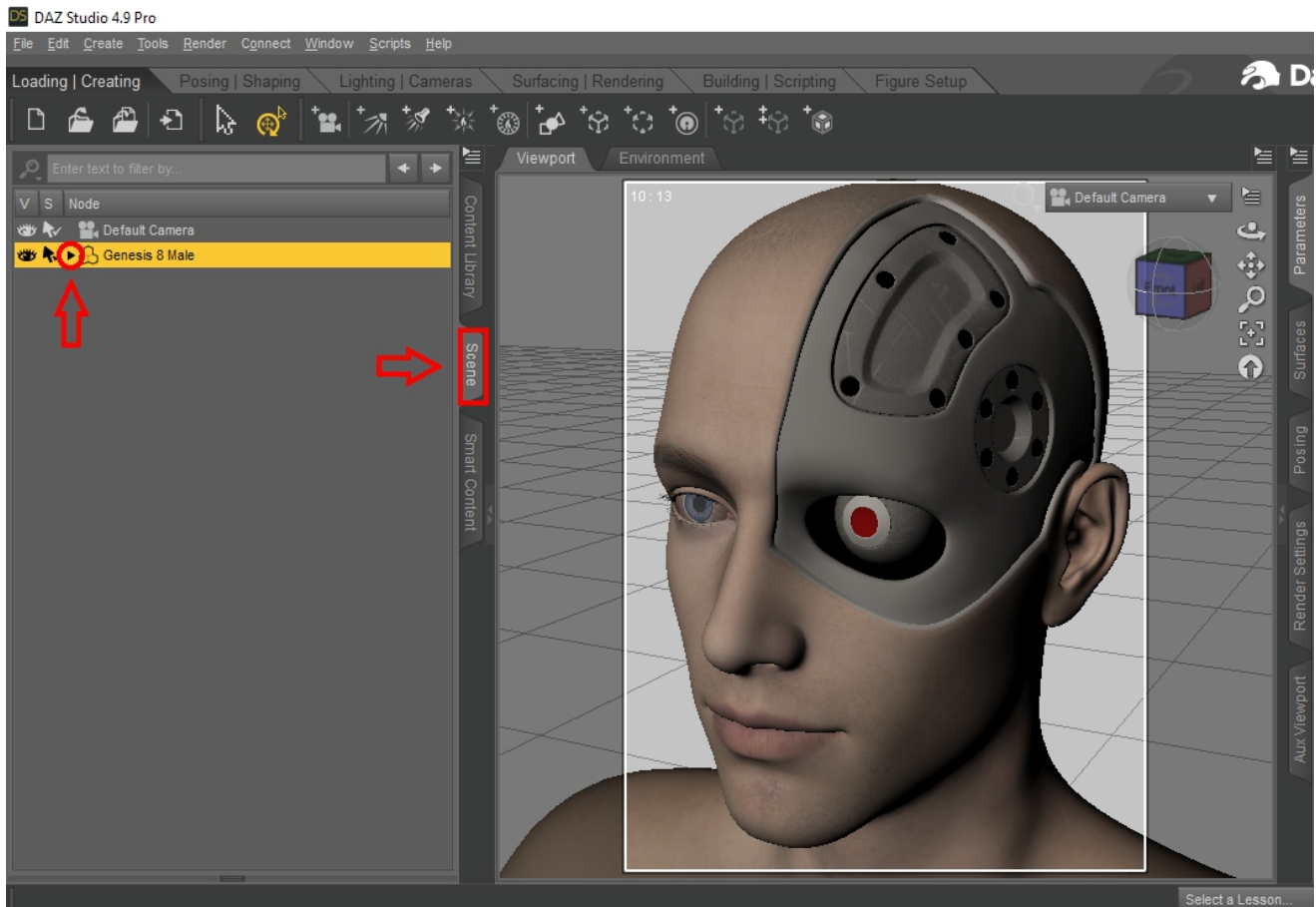


- While you are still holding the mouse-button down, a context menu will appear. Move your mouse-cursor over the **“Apply to Genesis 8 Male Eyelashes”** option, and release the mouse-button. And there you have it... the left eyelashes are invisible. See image below.

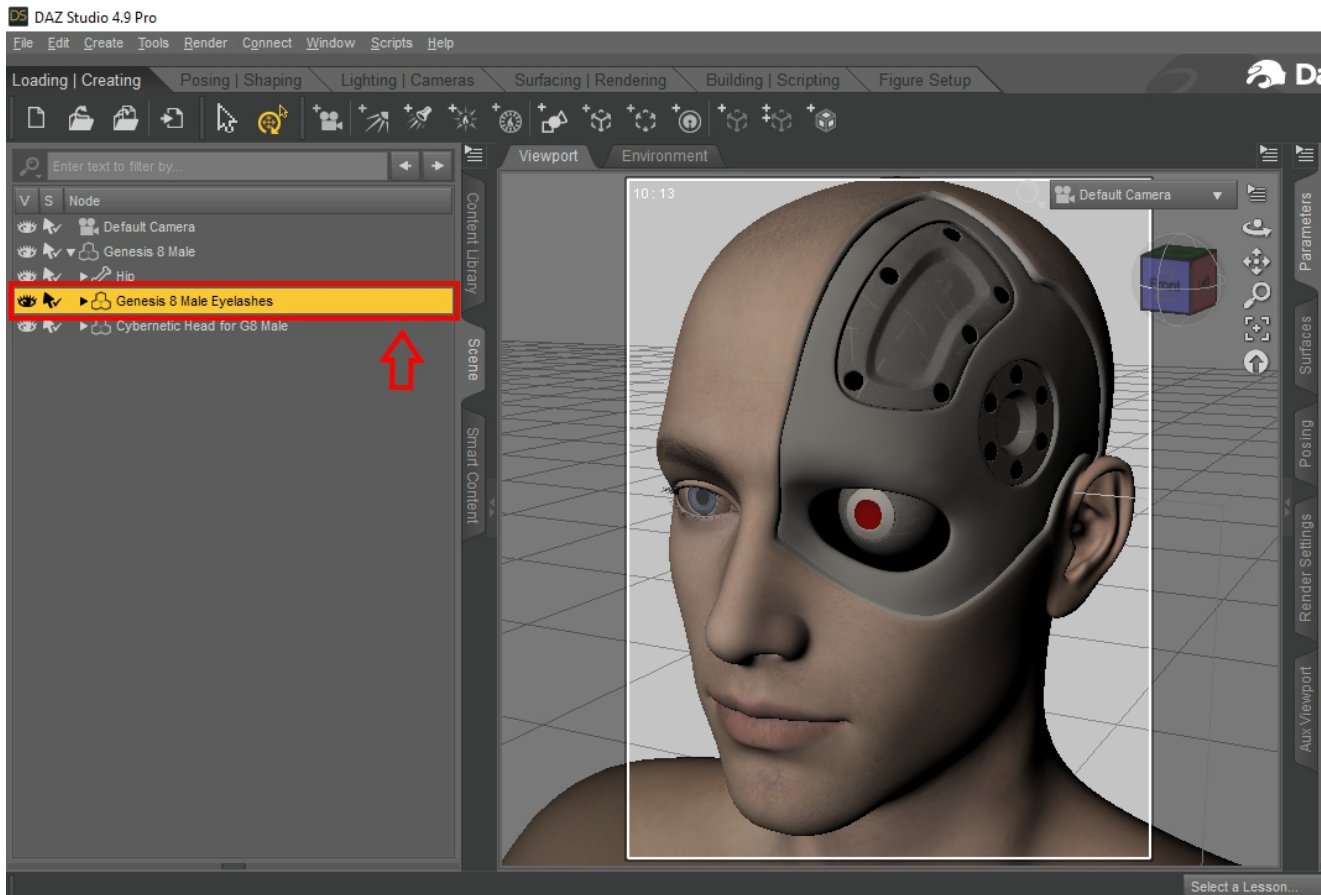


## Method 2:

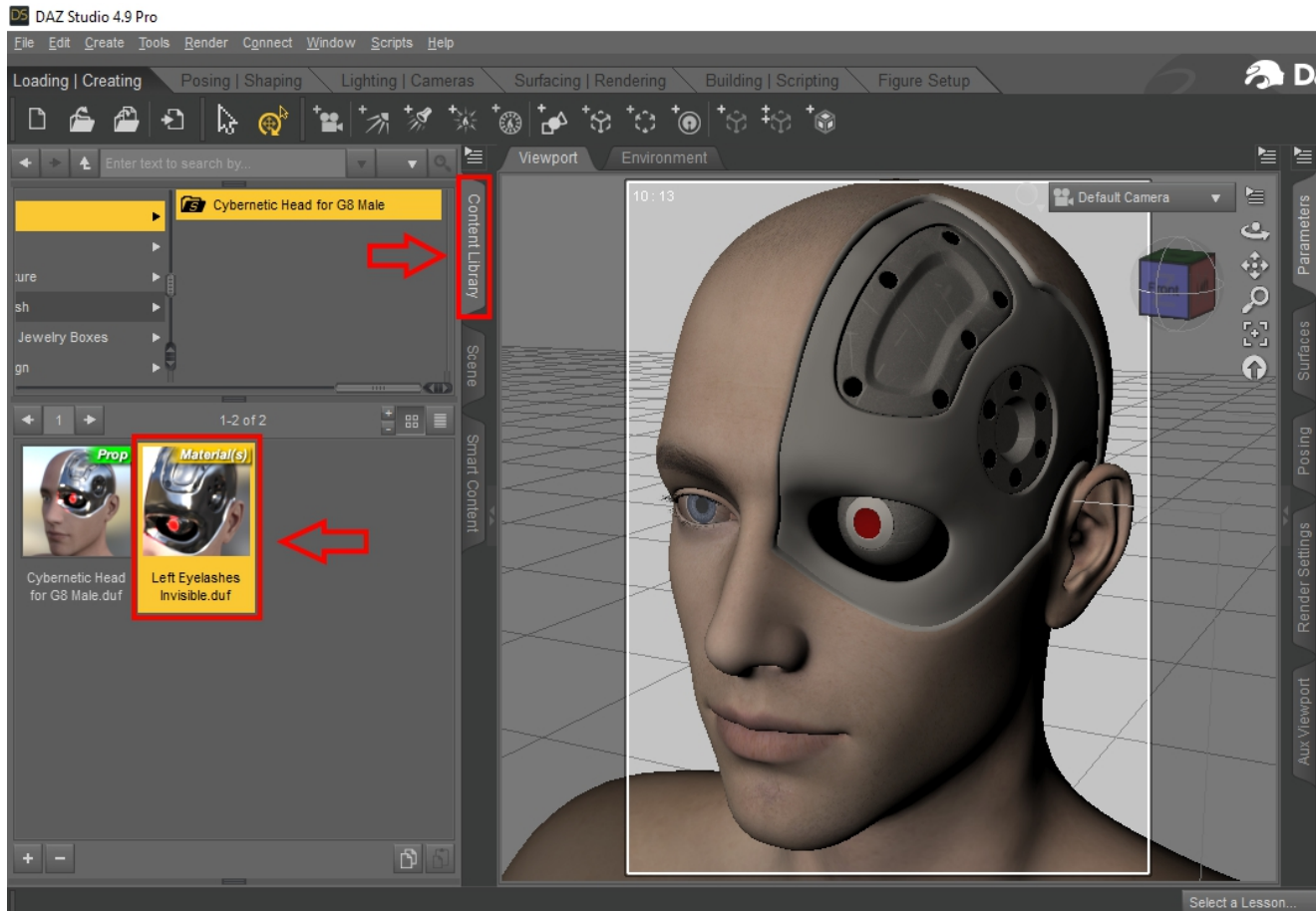
- In the **Scene** tab, click on the **little triangle** next to the “Genesis 8 Male” in the list. See image below.



- Now click on **“Genesis 8 Male Eyelashes”** to highlight them in the Scene tab. See image below.



- Now simply find the “**Left Eyelashes Invisible**” material in the **Content Library** tab, and **double-click** it to make the left eyelashes invisible. See image below.



These are two possible methods to make the left eyelashes invisible, because having organic eyelashes in front of a cybernetic eye is just plain weird ;-)



2. Second thing to remember: If you apply **too many morphs** to the G8 Male's head at the same time, you might end up with **ugly and strange-looking results**. This is true with or without the Cybernetic Head prop applied. ...In fact this is true of many models that can be morphed and/or posed.

**Too many simultaneous morphs = Weird Results.**

3. Third thing to remember: Many of your Hair props, Hats and other head-related props can still be used along with the Cybernetic Head prop.

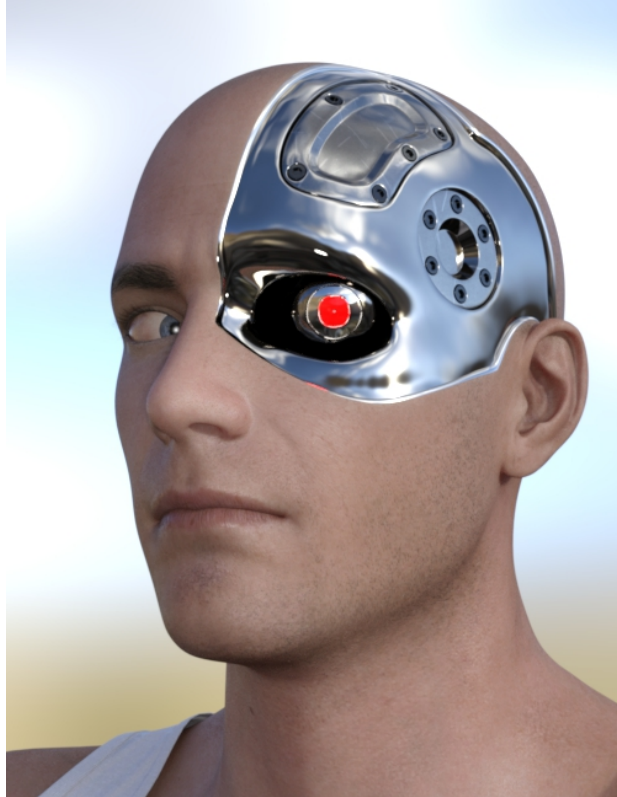
There's no rule that says a cyborg must be bald ;-)



4. Fourth thing to remember: The Cybernetic Head prop will still work when the Michael 8 morph is applied.



5. Fifth thing to remember: The cybernetic eye's poses are controlled by using the **Pose Controls of the Genesis 8 Male** figure.



Once again, thank you for purchasing this product. I truly hope you enjoy it as much as I enjoyed making it.

Happy Rendering,  
JSchaper